

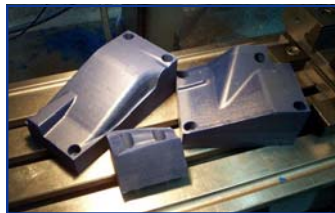
Machine Overview

- 3 Engine Lathes
(2 - 15" x 50", 9" x 20")
- 2 Vertical Milling Machines
(3 hp with Digital Readout)
- Vertical CNC Milling Machine
(3 hp with 3-axis CNC)
- 6" x 18" Surface Grinder
- 4" x 6" Steel Band Saw
- 9" x 11" Mitre Steel Band Saw
- 50 ton Hydraulic Press
- Drill Sharpener
- Pipe Threading Machine
- Bead Blasting Cabinet

Information Technology

Distance is no longer a barrier for business. Electronic communications and cost effective shipping options provide competitive service to customers all across Canada.

R&R Machine & Tool can exchange digital 3D CAD models and 2D drawings electronically. This enables remote



design collaboration with our customers, timely *manufactured parts* and accurate quoting, and efficient CAM manufacturing. Customers can provide a digital model of their design, we can assist in the design process, or we can reverse engineer an existing part.

Contact Us



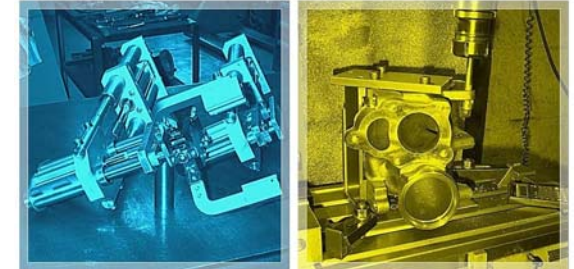
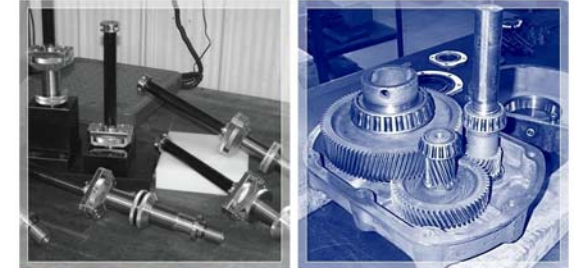
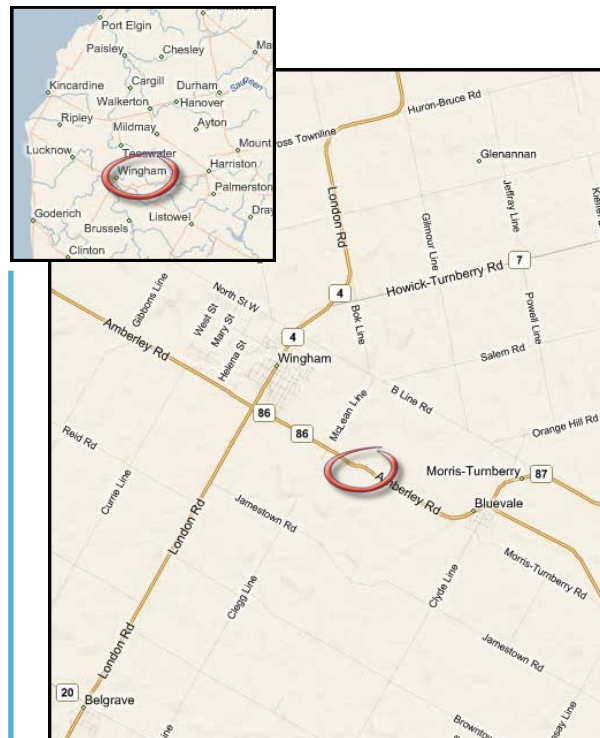
40827 Amberley Road, P.O. Box 992
Wingham, ON N0G 2W0

P: 519-357-1141

F: 519-357-4652

ron.schefter@rrmachinetool.com

www.rrmachinetool.com



Our Vision

To continually improve and expand our services while meeting our customers needs creatively and at a fair value.

<http://www.rrmachinetool.com>

History

R&R Machine & Tool Inc. is a family-owned business, established in 1984. The founder, Ron Schefter, bases his business on quality craftsmanship, delivered on time and at a fair price.

Our services continue to expand, meeting the needs of our growing customer base.

R&R Machine & Tool remains committed to the fundamental principles of personal customer service and pride in workmanship.

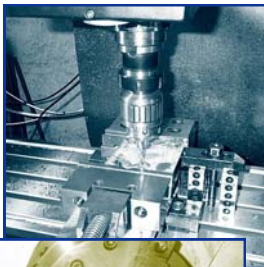
"We have been dealing with R&R Machine & Tool for over 15 years, and can safely say that the workmanship and customer service is exceptional!"

*Leo Fernandes
Hospitality Network*

Services Offered

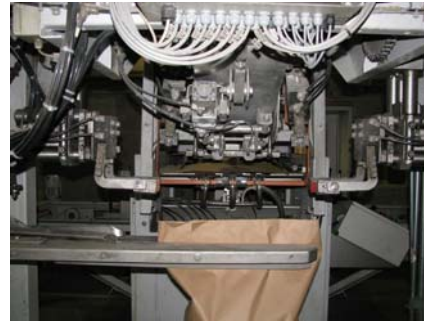
Our shop offers a complete line of precision machining, tooling and prototype services with a focus on short-run, just-in-time manufacturing of custom components, pre-designed parts and assemblies.

We manufacture products using many materials such as ferrous and non-ferrous metals, alloys, plastics, and carbon fiber.



Turning 62HRC carbon steel with ceramics

Our complimentary mechanical shop focuses on rebuilding and repairing industrial transmissions, gear boxes, and rebuilding/modifying specialized equipment, jigs and fixtures.



Rebuilding of bagger and component parts

We also manufacture restoration components for antique tractors and automobiles, recreational vehicles, lawn and garden equipment.

Value Added Services

- Anodizing
- Black Oxide Finishing
- Glass Bead Blasting
- Parts Identification
- Heat Treating
- Gear Manufacturing
- Flame, Laser, and Water Jet Cutting
- Blanchard Ground Plates
- Carbide Grinding
- Specialty Metals

Commitment to Quality Solutions for our Customers

Our business is based on customer service; working together as a creative team to provide innovative solutions with excellent value and quality, meeting requirements on time.

We stand behind our work 100%. To ensure customer satisfaction, every part is gauged prior to delivery.

"R & R Machine & Tool take the time to know their customers needs and applications and share information."

They are customer focused and demonstrate cost reduction initiatives and value added ideas."

Bert Hoffele, Spinrite Inc.

Our Customers

Our customer base is diverse and growing. Industries served include agriculture, automotive, construction, food processing, forestry, health care, manufacturing, metrology, mining, textiles and more.

